



WA Kirkbride

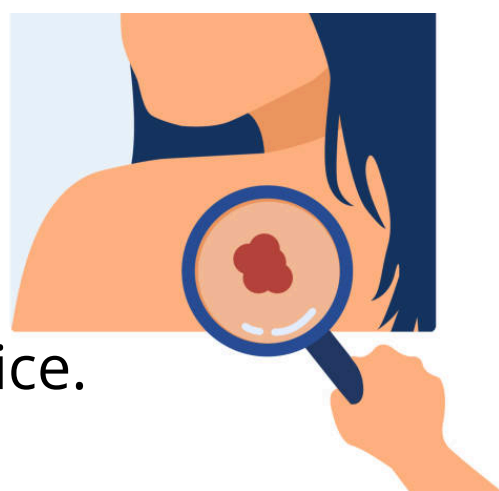
MELANOMA ADVISORY SERVICE

QUICK REFERENCE GUIDE



Thank you for your continuous support and referrals to WAKMAS, we appreciate you allowing us to provide the best care to your patients.

Please see this quick guide for our referral process and what to expect from our service.



OUR REFERRAL GUIDELINES

Melanoma with a Breslow Thickness $>0.8\text{mm}$ or $<0.8\text{mm}$ with high-risk features (Ulceration, LVI, MR $>1 /\text{mm}^2$)

MIA Prediction Tool for Sentinel Node Metastasis Risk

<https://www.melanomarisik.org.au/SNLLand?AspxAutoDetectCookieSupport=1>

- Nomogram $>5\%$ - WAKMAS does not recommend using the nomogram tool for patients where the primary BT is $<0.8\text{mm}$ unless there are other sinister features such as LVI or ulceration.

Unusual tumours (STUMP, Spitzoid, Paediatric)

Challenging sites (Conjunctival, Mucosal)

Shave biopsies are not recommended by WAKMAS. 2mm margins allows optimal assessment of tumour depth and characteristics if melanoma is confirmed. Incisional biopsy or a large punch (over 5mm) is preferred.



WHY REFER TO AN MDT?

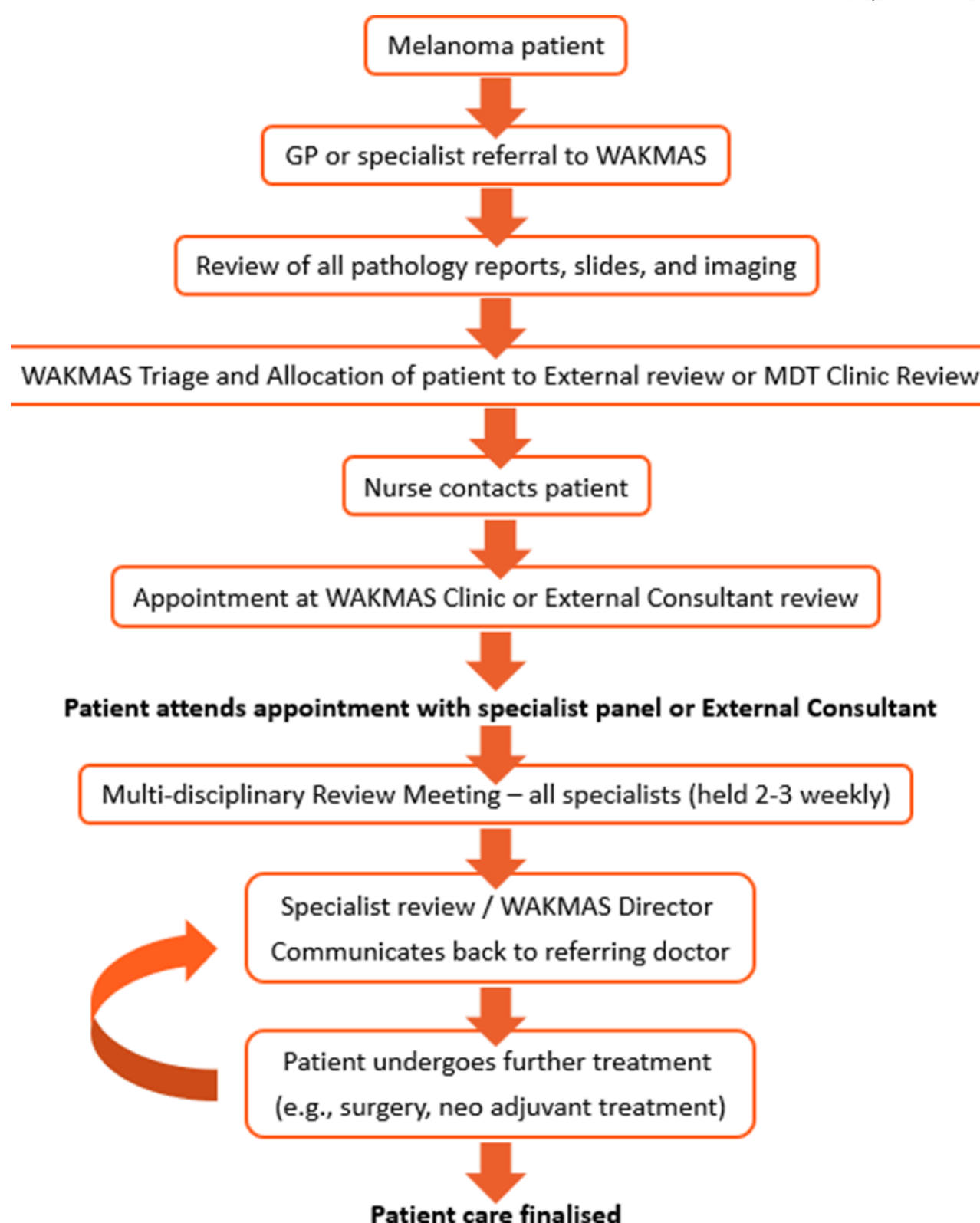
The Optimal Care Pathway recommends patients with advanced stage primary melanoma, lymph node involvement or melanoma in unusual sites (e.g. mucosal and disseminated melanoma) are best managed by multidisciplinary teams in a specialist or melanoma facility.

MDT care is associated with better adherence to guidelines, more appropriate use of therapies, and improved survival in melanoma

Our MDT consists of nurses and clinicians who come from a range of specialties, including Dermatology, General Surgery, Medical Oncology, Plastic & Reconstructive Surgery, Nuclear medicine and Pathology. All are all experienced in the management of melanoma.

All pathology is reviewed by our expert cutaneous histopathologists.

WAKMAS will organise investigations such as PET/CT, MRI, and molecular testing (BRAF mutation status, Array CGH, FISH) of the tumour as needed.



We aim to contact patients referred to our service within 48hrs. A referral will be sent externally to a Plastic Surgeon or Medical Oncologist either through the Private Sector or Publicly depending on the patients cover and preference. This referral is to discuss options, and the

Doctor will present the case at our next MDT.

A Dermatology appointment for a full body skin check will also be offered free of charge.



WHAT WE ASK FROM YOU

Before sending your referral to us, please speak with your patient and make them aware of their diagnosis and referral to our service.

Fill out our referral form on our website as thoroughly as you can and attach all relevant pathology.

Please do not hesitate to contact us directly if you have any queries or questions regarding referrals, we are always happy to help.



If you would like a copy of our recent updated guidelines, please email us to request a copy.

08 6151 0860

wakmas@perkins.org.au

<https://wakmas.org.au/>